

## Free Standing Display

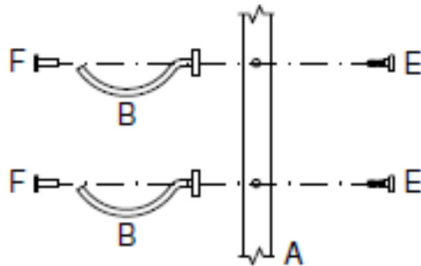
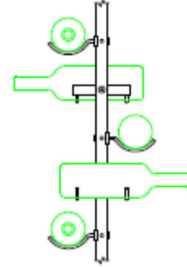
### Free Standing Parts:

- 3', 4', or 8' Base Rack Post (A)
- Bottle Brackets (Single, Double, or Triple) (B)
- Floor Mount (C)
- Ceiling Mount (D)
- Hexagonal Bolt (E) and Receiver (F) Sets
- Mounting Screws (2-5/8") (G)
- Joining Member (H)
- Plastic Hole Caps
- Hexagonal Wrenches

### Tools Needed:

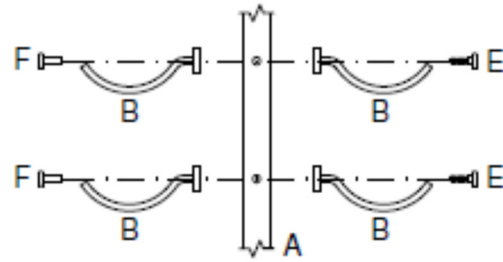
- Power Drill w/ #3 Phillips Head
- 3/16<sup>th</sup> Drill Bit Attachments
- Level
- Pencil
- Measuring Tape
- Stud Finder (if necessary)

### Display Style: Spiral



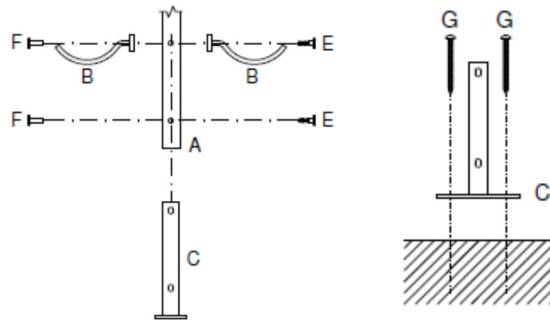
#### Attaching One Bracket per Hole Set:

1. Insert the hexagonal bolt (E) into the post (A).
2. Place the hexagonal receiver into the bracket (B).
3. Insert the receiver into the opposite hole from the bolt and tighten hexagonal set.
4. Insert plastic caps into the unused holes.



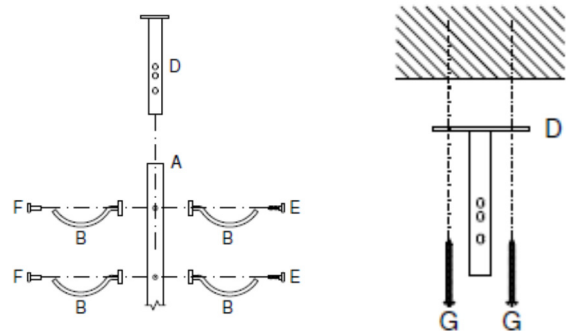
#### Attaching Two Brackets per Hole Set:

1. Insert the hexagonal bolt (E) into bracket (B).
2. Place the hexagonal receiver (F) into second bracket (B).
3. Insert the receiver with bracket into the hole set.
4. Insert the bolt with bracket into the opposite hole and tighten the hexagonal set together.
5. Insert plastic caps into the unused holes.



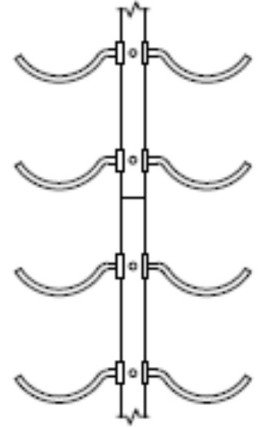
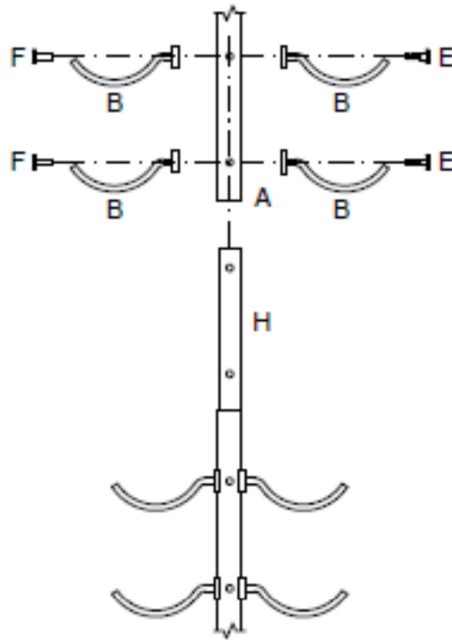
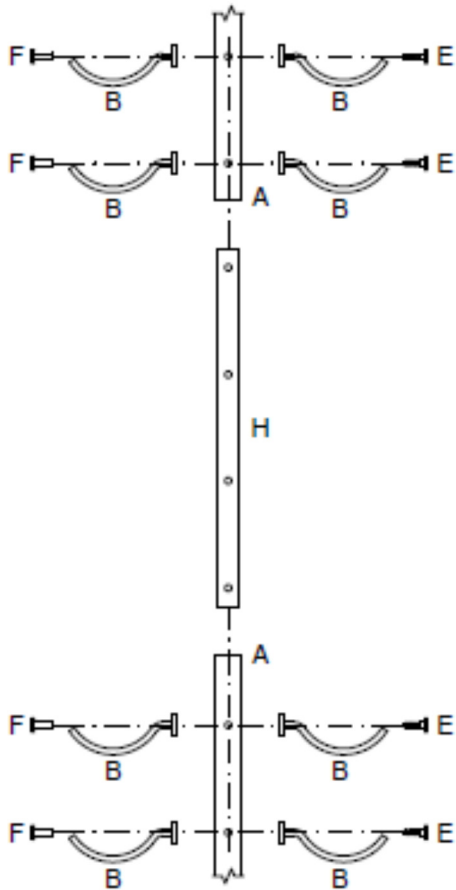
#### Attaching Floor Mount:

1. Insert floor mount (C) into the bottom of the post (A).
2. Attach the floor mount through the bottom hole set with only a hexagonal set (E & F), no bracket.
3. Install a bracket on the second hole set using the one or two bracket install instructions.
4. Insert hole caps into the used holes.
5. Move post in place and secure mount to floor with wood screws (G)



#### Attaching Ceiling Mount:

1. Insert the ceiling mount (D) into the top of the post (A)
2. After the post has been secured in place and plumbed using a level, slide the ceiling mount into place.
3. Secure Mount in place using wood screws (G).
4. Install a bracket into hole set using the one or two bracket install instructions.
5. Insert hole caps into the used holes.



### Attaching a Joining Member:

1. Insert the joining member (H) into the top of the longer (bottom) post (A). Joining member (H) will secure to the top two holes.
2. Install a bracket (B) on the second from top hole set using the one or two bracket install instructions.
3. Install a bracket (B) on the top hole set using the one or two bracket install instructions.
4. Once joining member is secured to the bottom post, insert the second post (A) over top of the joining member (H).
5. Install a bracket (B) on the two bottom hole sets using the one or two bracket install instructions.
6. Insert hole caps into the used holes.

### Contact Information

InVinity  
 Tel: 855-378-1004  
 Email: [support@invinitywinerack.com](mailto:support@invinitywinerack.com)

If you have any questions about installation and assembly, please feel free to contact us.

### Warranty

InVinity strives for excellence and guarantees their products to be free of defects from the fabrication stage to everyday use. InVinity will, at its own discretion, replace any parts or products it has deemed defective. This warranty does not cover abuse, misuse, damage, or accident in the consumer's handling and moving of their products.

## Spiral Display Style

The following instructions will help in the assembling of a spiral display style. All three wine bracket bottle depths\* can be used to achieve this look.

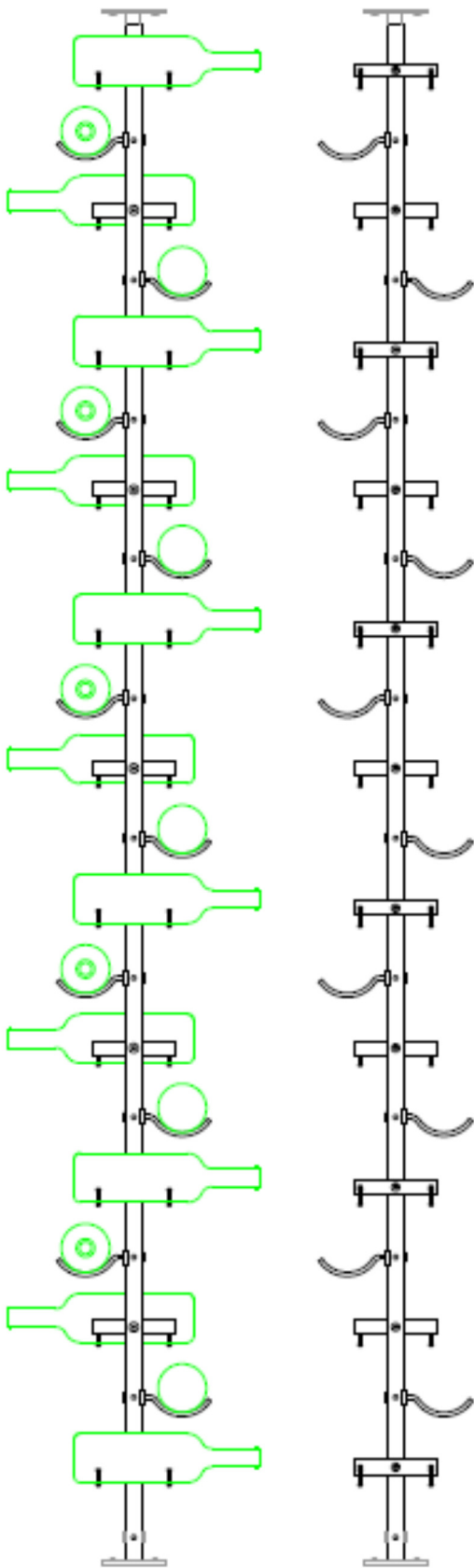
1. Starting at the bottom of the post, leave the two bottom holes open for the floor mount.
2. Secure a bracket to the post at the third hole set (**refer back to the single bracket install section**).
3. Determine the direction you wish the spiral to rotate left or right as it moves up the post. For a left handed rotation, turn the post to the right 90 degrees (the first bracket installed should now be facing directly out to the right of the post).

For a right handed rotation turn the post 90 degrees to the left with the first bracket facing to the left of the post.

4. Secure a bracket to the post.
5. Rotate the post 90 degrees in the same direction, and secure a bracket.
6. Repeat this pattern for the length of the post.
7. Continue the pattern up the post to the second to last hole set. (**If a metal joining member is going to be used, refer back to "Attaching Joining Member" instructions. Be sure to continue the pattern up the connected post until you reach the final hole set.**)
8. Insert hole caps into the unused holes.
9. Insert the floor mount\*\* and secure using the "Attaching Floor Mount" instructions (**align the mount with post in the direction you want the rack to be displayed, and be sure to secure the bracket in the same pattern**).
10. Insert the ceiling mount and secure using the "Attaching Ceiling Mount" instructions.
11. If creating multiple **Spiral Display Racks** in line, be sure to assemble the racks the same way.

**\*When assembling a wine display rack, please keep in mind depth of the assembled racks and allow for correct spacing.**

**\*\*We recommend the mount be inserted with the plate facing left-to-right along the face of the display.**



For more information and helpful assembly tips, please visit our website ([www.invinitywinerack.com](http://www.invinitywinerack.com)), email us at [support@invinitywinerack.com](mailto:support@invinitywinerack.com), or call us at 1-855-378-1004.