

Free Standing Display

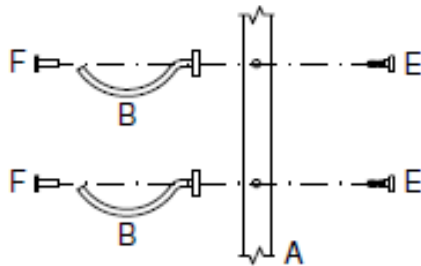
Free Standing Parts:

- 3', 4', or 8' Base Rack Post (A)
- Bottle Brackets (Single, Double, or Triple) (B)
- Floor Mount (C)
- Ceiling Mount (D)
- Hexagonal Bolt (E) and Receiver (F) Sets
- Mounting Screws (2-5/8") (G)
- Joining Member (H)
- Plastic Hole Caps
- Hexagonal Wrenches

Tools Needed:

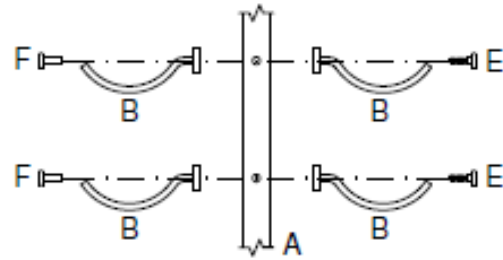
- Power Drill w/ #3 Phillips Head
- 3/16th Drill Bit Attachments
- Level
- Pencil
- Measuring Tape
- Stud Finder (if necessary)

Standard Display Style



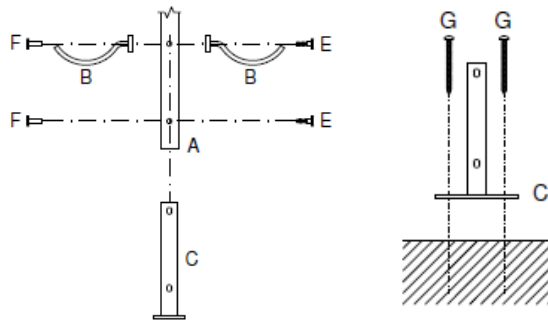
Attaching One Bracket per Hole Set:

1. Insert the hexagonal bolt (E) into the post (A).
2. Place the hexagonal receiver (F) into the bracket (B).
3. Insert the receiver into the opposite hole from the bolt and tighten hexagonal set.
4. Insert plastic caps into the unused holes.



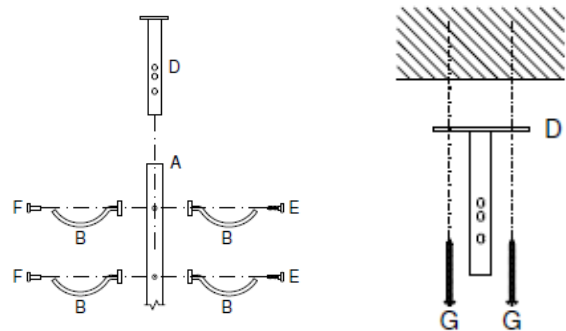
Attaching Two Brackets per Hole Set:

1. Insert the hexagonal bolt (E) into bracket (B).
2. Place the hexagonal receiver (F) into second bracket (B).
3. Insert the receiver with bracket into the hole set.
4. Insert the bolt with bracket into the opposite hole and tighten the hexagonal set together.
5. Insert plastic caps into the unused holes.



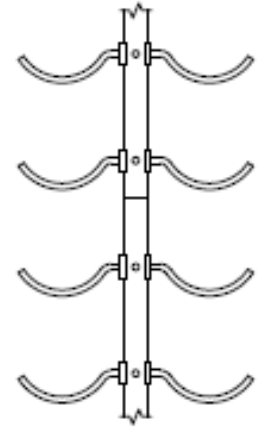
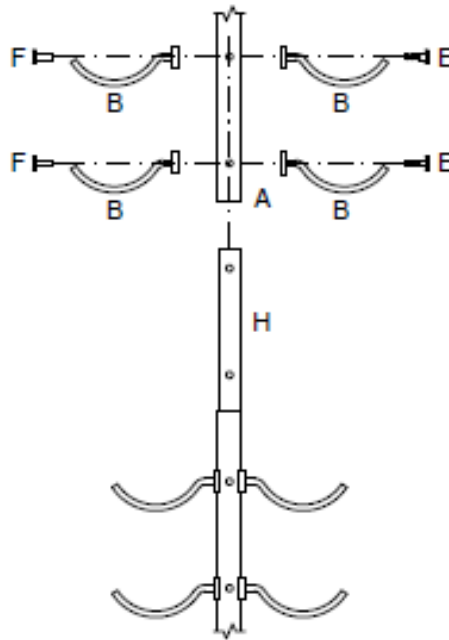
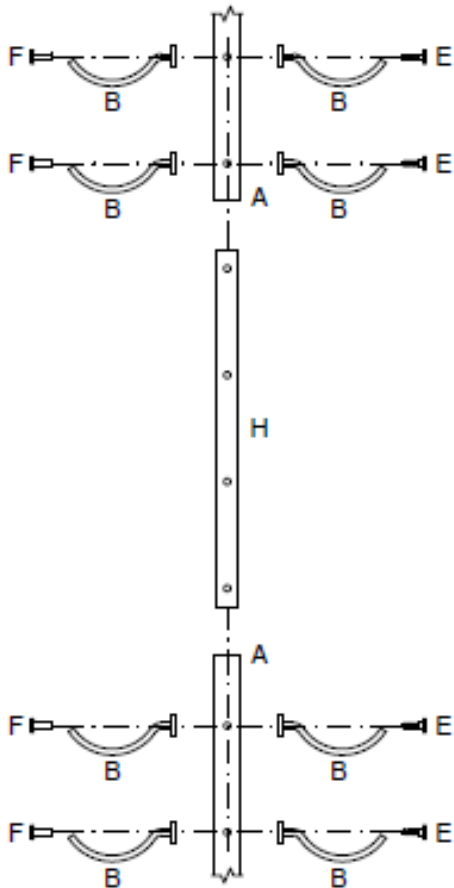
Attaching Floor Mount:

1. Insert floor mount (C) into the bottom of the post (A).
2. Attach the floor mount through the bottom hole set with only a hexagonal set (E & F), no bracket.
3. Install a bracket on the second hole set using the one or two bracket install instructions.
4. Insert hole caps into the unused holes.
5. Move post in place and secure mount to floor with wood screws (G).



Attaching Ceiling Mount:

1. Insert the ceiling mount (D) into the top of the post (A).
2. After the post has been secured in place and plumbed using a level, slide the ceiling mount into place.
3. Secure Mount in place using wood screws (G).
4. Install a bracket into hole set using the one or two bracket install instructions.
5. Insert hole caps into the unused holes.



Attaching a Joining Member:

1. Insert the joining member (**H**) into the top of the longer (bottom) post (**A**). Joining member (**H**) will secure to the top two holes.
2. Install a bracket (**B**) on the second from top hole set using the one or two bracket install instructions.
3. Install a bracket (**B**) on the top hole set using the one or two bracket install instructions.
4. Once joining member is secured to the bottom post, insert the second post (**A**) over top of the joining member (**H**).
5. Install a bracket (**B**) on the two bottom hole sets using the one or two bracket install instructions.
6. Insert hole caps into the unused holes.

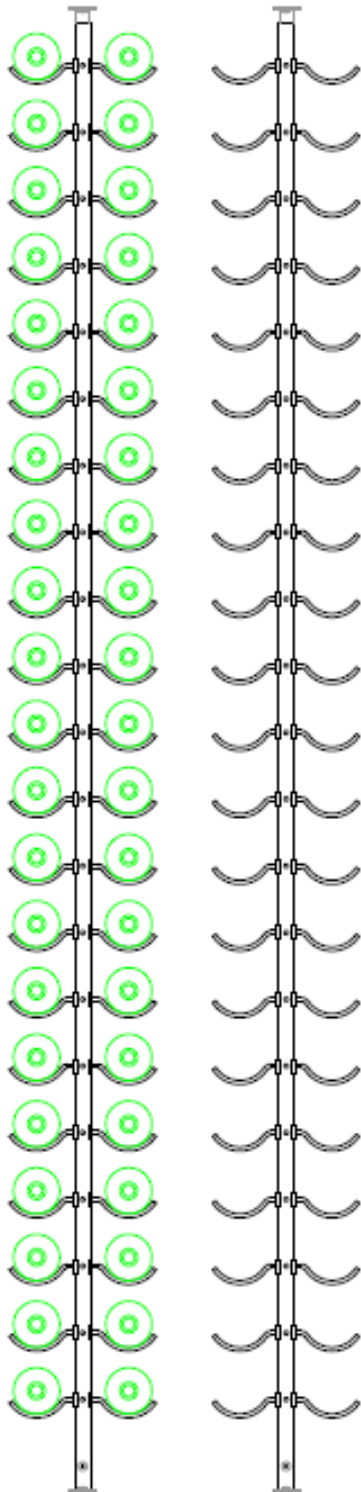
Contact Information

InVinity
 Tel: 855-378-1004
 Email: support@invinitywinerack.com

If you have any questions about installation and assembly, please feel free to contact us.

Warranty

InVinity strives for excellence and guarantees their products to be free of defects from the fabrication stage to everyday use. InVinity will, at its own discretion, replace any parts or products it has deemed defective. This warranty does not cover abuse, misuse, damage, or accident in the consumer's handling and moving of their products.



Front View

Standard Display Style

The following instructions will help in the assembling of a **Standard Display Style**. All three wine bracket bottle depths* can be used to achieve this look.

1. Starting at the bottom of the post, leave the two bottom holes open for the floor mount.
2. Secure the brackets to the post at the third hole set using the **“Attaching Two Brackets per Hole Set”** instructions.
3. Move up the post to the next hole set and secure the brackets on the same sides of the post.
4. Repeat this pattern for the length of the post.
5. Continue the pattern up the post to the second to last hole set. **(If a metal joining member is going to be used, refer back to “Attaching Joining Member” instructions. Be sure to continue the pattern up the connected post until you reach the final hole set.)**
6. Insert hole caps into the unused holes.
7. Insert the floor mount** and secure using the **“Attaching Floor Mount”** instructions **(align the mount with post in the direction you want the rack to be displayed, and be sure to secure the bracket in the same pattern).**
8. Insert the ceiling mount and secure using the **“Attaching Ceiling Mount”** instructions.

***When assembling a wine display rack, please keep in mind depth of the assembled racks and allow for correct spacing.**

****For a standard display, the posts can be mounted with either the labels, bottle necks, or bottle bottoms facing out.**

For more information, helpful assembly tips, and design ideas please visit our website,

www.invinitywinerack.com.